

Factory Profile of



VIRGO M H LIMITED

(Virgo Mahabuba Holdings Limited)

Address & Contact

Bangladesh Head Office

House #178, Road # 2, Baridhara D.O.H.S, Dhaka - 1206, Bangladesh
Phone : +880 2 8410674

Factory

43/2, Gazipura, BOF, Gazipur Sadar, Gazipur, Bangladesh

Contact Person

Syed Nafiz Nazrul Raiyan
Chairman
Head Office

Phone: +8801847 137 186
email: raiyan@virgo.com.bd

Syed Ishmum Farooque
Managing Director
Head Office

Phone: +88 01730 352 222
email: ishmum@virgo.com.bd

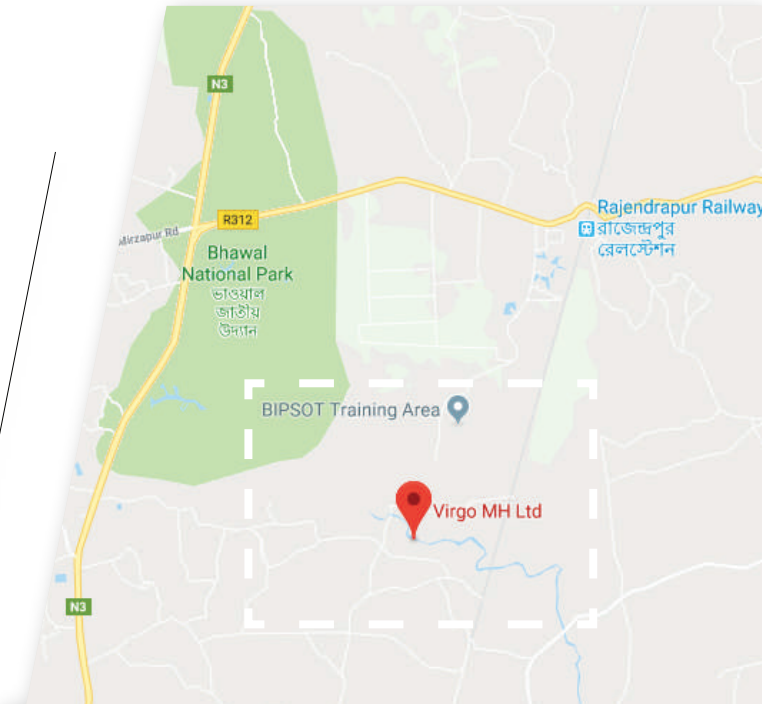
Amal Halder
Deputy Managing Director
Head Office

Phone: +8801847 137 195
email: amal@virgo.com.bd

www.VirgoMH.com



Virgo MH Ltd.
Ac No: 0022-0210015235
Trust Bank Ltd. Millennium Corporate Branch, Shadhinata Tower, Jahangir gate.
SWIFT Code: TTBLBDDH022





2

Virgo M H Limited

ACCORD Green Standard
on Fire and Building safety in Bangladesh

3
The Factory



4

Practices
& Facilities



5

Our
Factory Space
Workforce



6

Factory Layout



11

Our Products
Our Buyers



15

Store Department

16

Fire Safety
Measures



17

General Safety
Measures



18

Security Measures



20

Worker welfare



23

Special Machines

19

Utilities



22

Facilities



27

CAD Section



28

Machine List



Green Standard

Maintaining the compliance as per requirement of European buyers (Accord),

Factory is "Green" standard



The Bangladeshi clothing manufacturer's share of the global market is steadily growing in the wake of the success of the Ready-made Garments (RMG) sector. Virgo M H is also willing to compete in the global market to provide superior quality products to the buyers and achieve its desired goal.

Virgo M H Limited is a modern factory equipped with the latest Automation Machinery from Juki and other world-class brands which made in Japan, China, Korea, Taiwan, Malaysia, Germany, UK, etc.

Virgo M H Limited with skilled workers, breathing environment and relaxed working atmosphere, wants to prove itself as a well designed and well equipped modern factory of Bangladesh.



NEXT & "C&A" APPROVED FACILITY

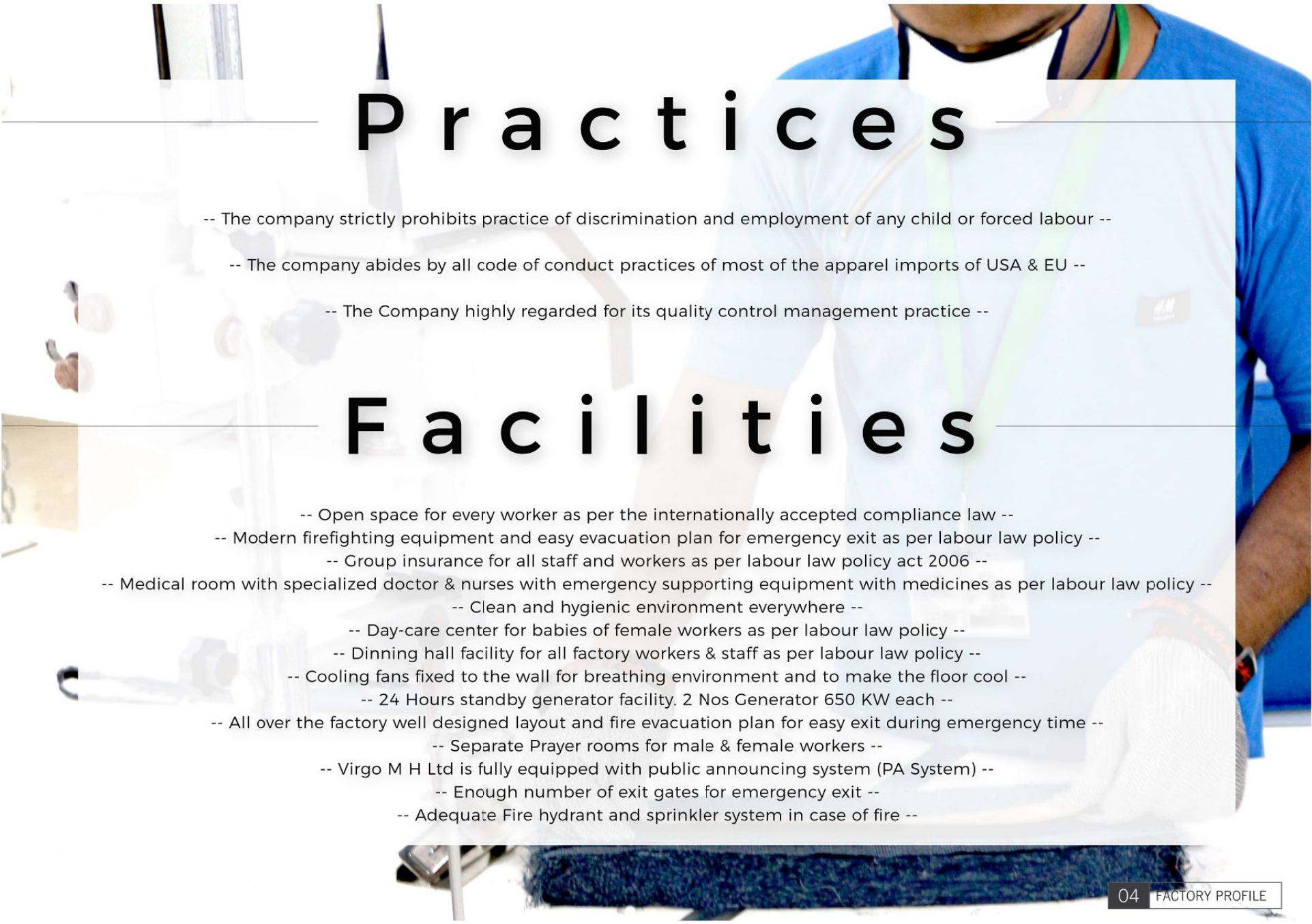


VIRGO M H LIMITED

The Factory

This Factory has extended all the Facilities to its human resource as,

- # Standard wage rate,
- # Attendance bonuses,
- # Excellent Dining area,
- # Productivity bonuses,
- # Overtime rate as per local law,
- # Standard clean & hygienic Toilets,
- # Day care center for workers children,
- # Full time Doctor & Nurse Facility,
- # Occupational & fire safe environmental friendly working area.



Practices

- The company strictly prohibits practice of discrimination and employment of any child or forced labour --
- The company abides by all code of conduct practices of most of the apparel imports of USA & EU --
- The Company highly regarded for its quality control management practice --

Facilities

- Open space for every worker as per the internationally accepted compliance law --
- Modern firefighting equipment and easy evacuation plan for emergency exit as per labour law policy --
- Group insurance for all staff and workers as per labour law policy act 2006 --
- Medical room with specialized doctor & nurses with emergency supporting equipment with medicines as per labour law policy --
- Clean and hygienic environment everywhere --
- Day-care center for babies of female workers as per labour law policy --
- Dining hall facility for all factory workers & staff as per labour law policy --
- Cooling fans fixed to the wall for breathing environment and to make the floor cool --
- 24 Hours standby generator facility. 2 Nos Generator 650 KW each --
- All over the factory well designed layout and fire evacuation plan for easy exit during emergency time --
- Separate Prayer rooms for male & female workers --
- Virgo M H Ltd is fully equipped with public announcing system (PA System) --
- Enough number of exit gates for emergency exit --
- Adequate Fire hydrant and sprinkler system in case of fire --

quality

Quality management system (QMS) is Placed in Our Facility that documents processes, procedures, and responsibilities for achieving quality policies and objectives.

It helps coordinate and directs Our organization activities to meet customer and regulatory requirements and improve its effectiveness and efficiency continuously.

Quality management systems serve many purposes in Our Organization as below

- Improving processes and help to do Right First time.
- Reducing waste.
- Lowering costs.
- Facilitating and identifying training opportunities
- Engaging staff
- Setting an organization-wide direction.

Virgo M H Moto is Always QUALITY FIRST.



TOTAL AREA 1,63,945 SQ FT
PER PRODUCTION FLOOR 48,650 SQ FT

work force

Right now there are 600
Workers and staff work together

By December 2019,
There will be 1100 workers and staff

factory space

Virgo M H Ltd Comprising of
2 Storied garments building,
Covering Warehouse, Cutting, Sewing,
Finishing, Dinning / Canteen, Doctor's room
and Day Care facilities

strengths

Virgo M H Strength is Having Well Trained Skill
workforce Including Multi skill Staff Who Can Handle
Any Kind of product Maintaining Highest Quality
Standard

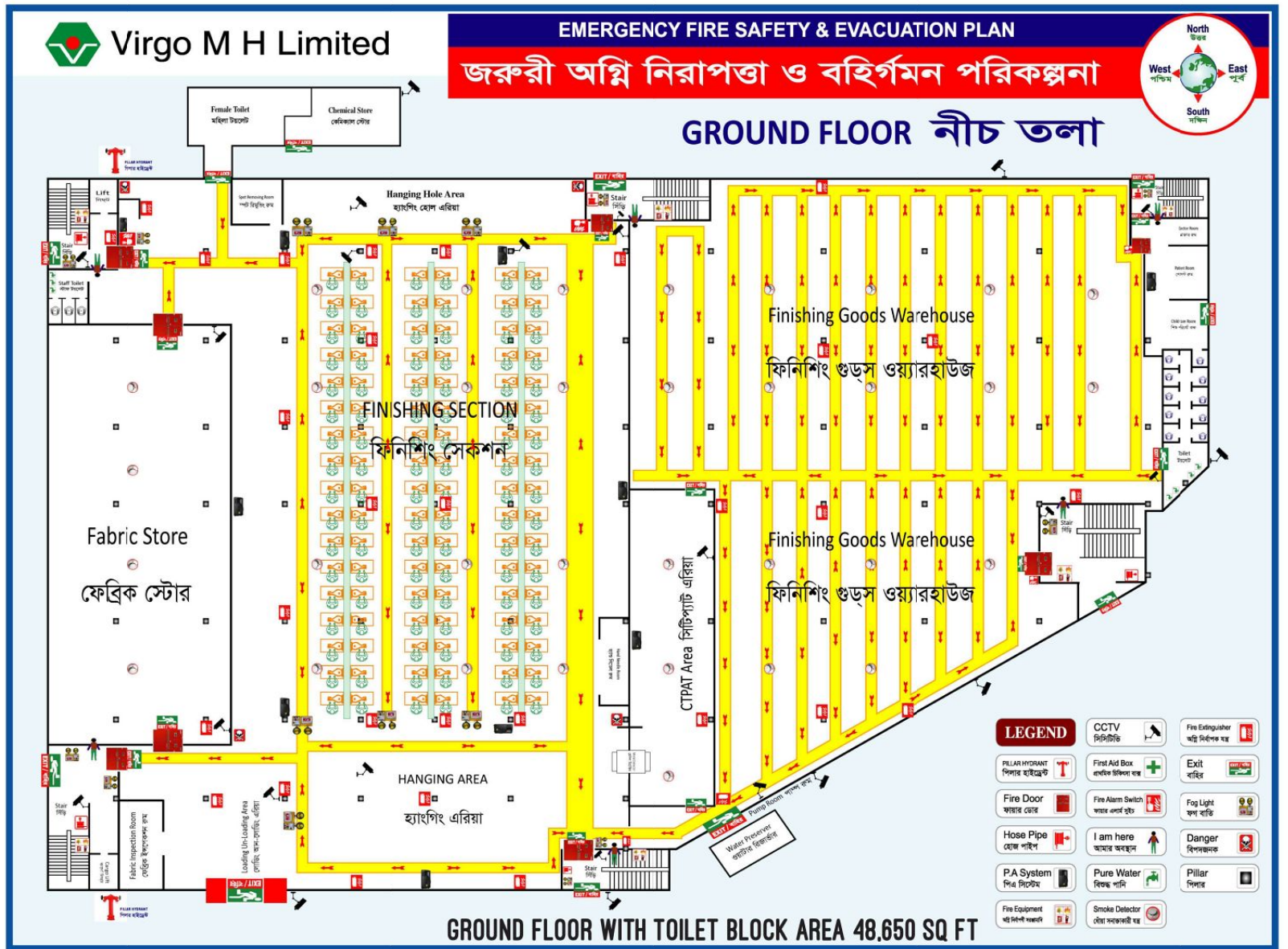


TOTAL LAND AREA 80.970 SQ FT



LEGEND

PILLAR HYDRANT পিলার হাইড্রেন্ট	I am here আমার অবস্থান
Fire Door ফায়ার ডোর	Pure Water বিশুদ্ধ পানি
Hose Pipe হোস পাইপ	Pillar পিলার
P.A System পিএ সিস্টেম	Smoke Detector স্মোক ডিটেক্টর
Fire Equipment ফায়ার ইকুইপমেন্ট	Fire Extinguisher অগ্নি নির্বাপক যন্ত্র
CCTV সিটিভি	Exit বাহির
First Aid Box ফার্স্ট অয়েড বক্স	Fog Light ফগ লাইট
Fire Alarm Switch ফায়ার অ্যালার্ম সুইচ	Danger বিপদজনক





Virgo M H Limited

EMERGENCY FIRE SAFETY & EVACUATION PLAN

জরুরী অগ্নি নিরাপত্তা ও বহির্গমন পরিকল্পনা



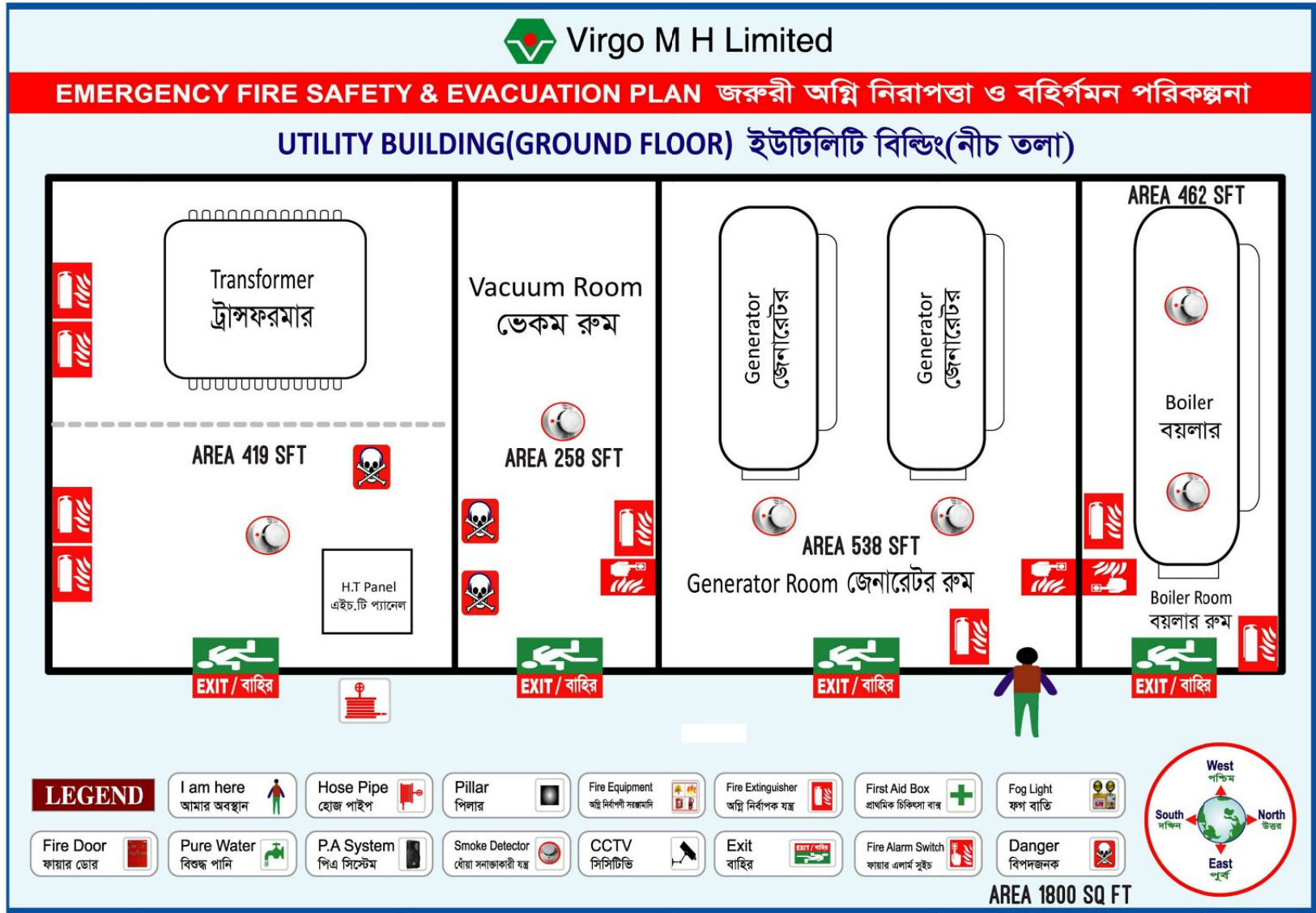
1ST FLOOR ২য় তলা



1ST FLOOR WITH TOILET BLOCK AREA 48,665 SQ FT

LEGEND

CCTV	Fire Extinguisher
PILLAR HYDRANT	First Aid Box
Fire Door	Fire Alarm Switch
Hose Pipe	I am here
P.A System	Pure Water
Fire Equipment	Smoke Detector
Exit	Danger
Exit	Pillar

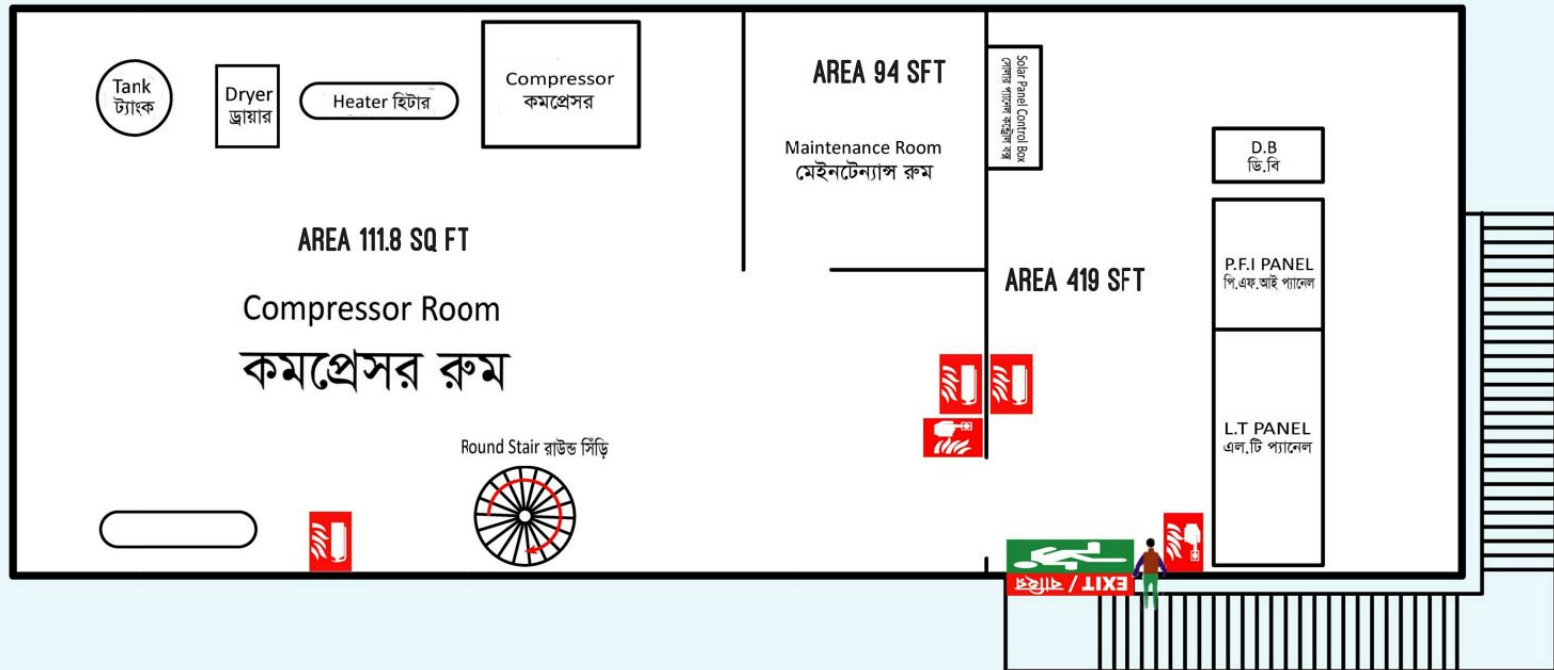




Virgo M H Limited

EMERGENCY FIRE SAFETY & EVACUATION PLAN জরুরী অগ্নি নিরাপত্তা ও বহিগমন পরিকল্পনা

UTILITY BUILDING(1ST FLOOR) ইউটিলিটি বিল্ডিং(২য় তলা)



LEGEND

I am here আমার অবস্থান	Hose Pipe হোজ পাইপ	Pillar পিলার	Fire Equipment অগ্নি নির্বাপনী সরঞ্জামাদি	Fire Extinguisher অগ্নি নির্বাপক যন্ত্র	First Aid Box প্রাথমিক চিকিৎসা বাক্স	Fog Light ফগ বাতি
Fire Door ফায়ার ডোর	Pure Water বিশুদ্ধ পানি	P.A System পিএ সিস্টেম	Smoke Detector সোয়া সনাক্তকারী যন্ত্র	CCTV সিসিটিভি	Exit বাহির	Fire Alarm Switch ফায়ার এলার্ম সুইচ
						Danger বিপদজনক



AREA 1800 SQ FT

our products

- MEN'S FORMAL SUIT
- MEN'S FORMAL BLAZER
- MEN'S FORMAL TROUSER
- MEN'S CASUAL TROUSER
- MEN'S SHIRTS
- LADIES COAT
- LADIES BLAZER
- LADIES TROUSER
- LADIES SKIRT
- LADIES CASUAL TOPS



our buyers



Capacity

Blazer 75,000 / month
Trousers / Skirt 52,000 / month
Other 1,30,000 / Month

our products



our products



our products



store department

Store department receives all new material for any new orders.

Main Functions of our store department are:

- = 4 Point Fabric inspection system
- = Accessories inspection AQL 1.5
- = Inventory maintain of all material received
- = Issue materials to the various department as per requirement.
- = Machinery & Equipment stock management
- = Office stationary management



Fire Safety measures

Emergency FOG Light



Smoke Detector



Sprinkler System



Exit Fire Door



Exit Sign



Fire Extinguisher



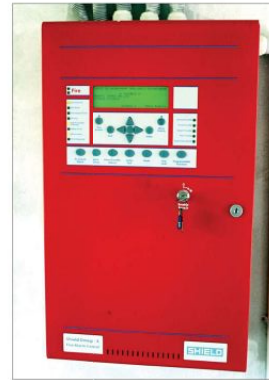
Bonded Warehouse



Fire Hose Rack



Fire Alarm Control



Pump Room



Emergency Fire Button



Fire Service Connection



General Safety measures

First aid Team



Fire Response Team



Rescue Team



Danger Sign



First Aid Box



Metal Disposal Box



washroom notices



Notice for Sharp Objects



Needle Control Room



Needle Detector



Security measures

Biometric
Access Control



No ID No Entry



Security Officers
at check point



Security officer
with Metal Detector



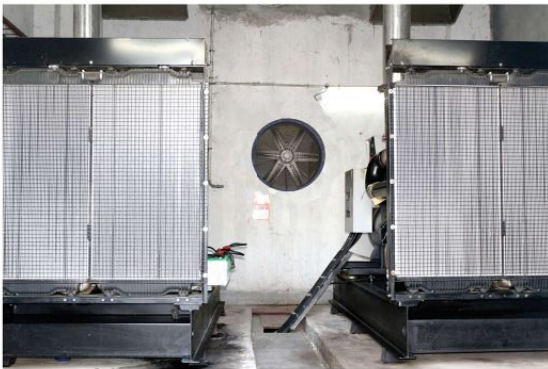
CT-PAT Area



Car Checking

Utilities

Generator



Diesel Boiler

Coal Boiler



Control panel



Compressor



Sub station



Vaccum room



worker welfare

Dinning Hall



Canteen Store

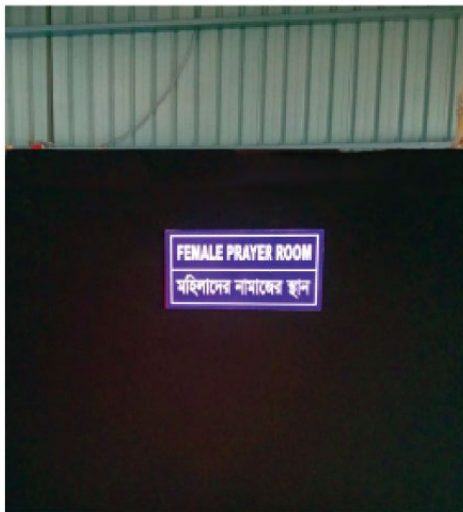


Emergency Fire Safety & Evacuation Plan :
Dinning Hall



AREA 6.385 SQFT

worker welfare



Prayer room



Doctor's room



Day Care Center



Facilities



Loading / Unloading Area



Spot Removing Room

Special Machines



Hand Stitch Machine



Eyelet Hole Machine



APW Machine



Sleeve Decoration Machine

special machines



Busting Machine



Heat Sealed Button Wrapping Machine



Shoulder Pad Attach Machine



Sleeve Join Machine



Button Attach Machine

special machines



Cutting Machine



Thread Sucker Machine



Band Knife Machine



Fusing Machine



special machines



Sleeve Press

Body Press



Collar Press



C A D S e c t i o n



Pattern Making



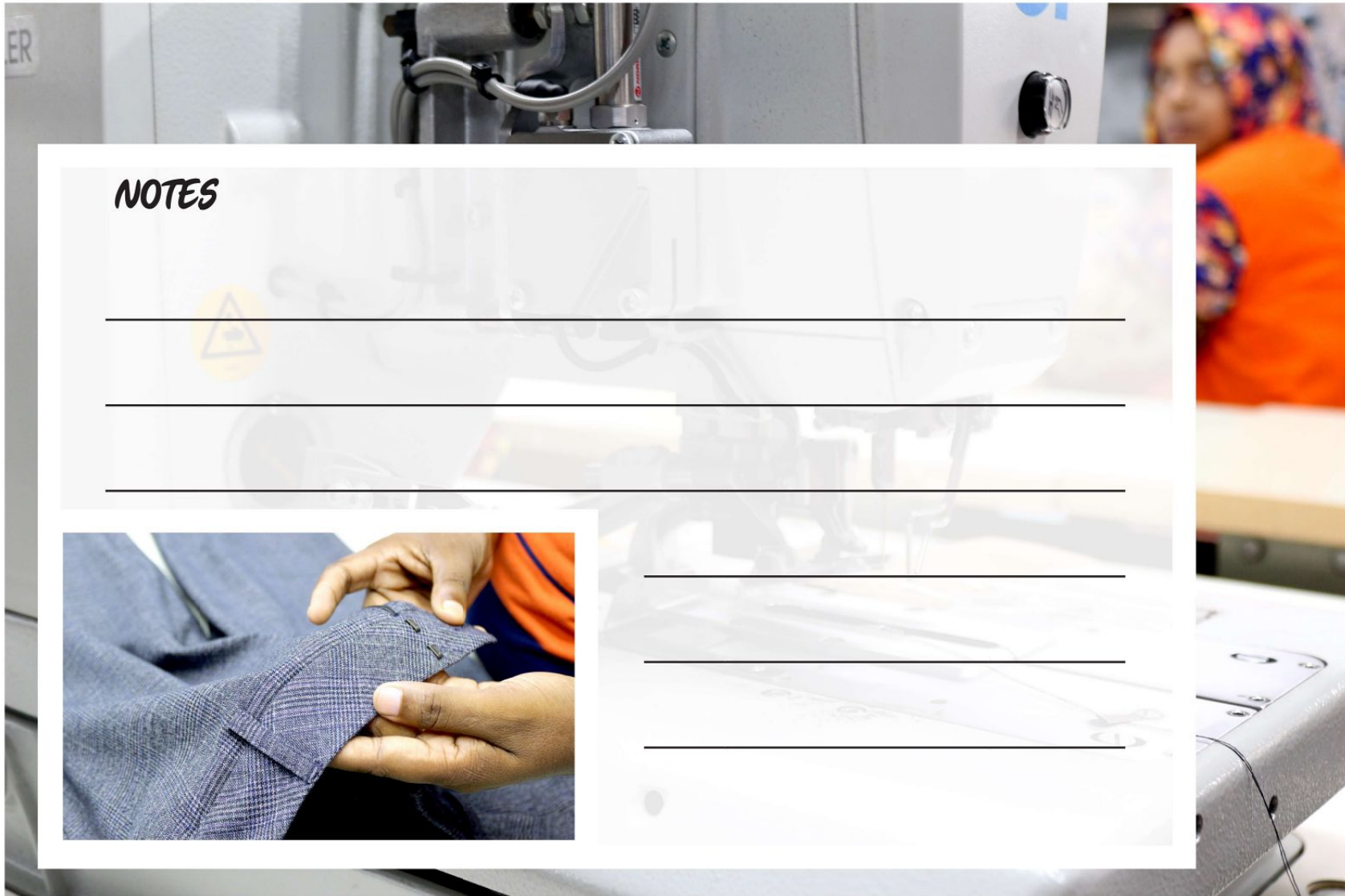
Pattern Cutting Machine



Plotter

Machine List

SL/No	MACHINE NAME	BAND	MODEL NO	SL/No	MACHINE NAME	BAND	MODEL NO	SL/No	MACHINE NAME	BAND	MODEL NO	SL/No	MACHINE NAME	BAND	MODEL NO
1	P/M MACHINE	JUKI	DDL-900B-MS	21	FABRIC INSPE	WEISHI	YBJ-180B	41	PLASTICK STAPLER	CHINA	CHINA	61	BOILER	CHINA	WN56-1
2	P/M MACHINE	JUKI	DDL-900AS	22	NUMBERING M/C	Blitz	2253	42	REVERSIBLE CLOTH DIVIDER	JAYA	JAYA	62	COPPRESSER	BOGE	DRC120
3	P/M VERTICAL	JUKI	5200N	23	NEEDLE/DETECO	HANMA	HAM-160	43	BUTTON WRAPPING	ASSCOLITE	MK-13	63	BACCUAM	CHINA	CHINA
4	ZIGZAG	JUKI	LZ 2280 A	24	CUTTING M/C	CHINA FJ8"	FJM103	44	BUTTON HOLE	JUKI	LBH-1790 AS	64	GENERATOR-1	PERKINS	17E12695/1
5	ZIGZAG	JUKI	LZ 2284 AT	25	HOOK & BAR BUTTON M/C	K.O	III	45	PRESS MACHINE	WEISSHI	AZT-018	65	GENERATOR-2	PERKINS	17E12695/2
6	PLAIN BASTTING	JUKI	DDL-900AS	26	BUTTON ATTACH AND WRAPPING	JUKI	289	46	PRESS MACHINE	WEISSHI	AZT-C36	66	TRANSFORMER (1500 KVA)	BETELCO	
7	TWO NEEDLE	JUKI	LH 3568A-7	27	PLOTTER /CUTTER	SINAJET TECH	FG1209	47	PRESS MACHINE	WEISSHI	AZT-C26A	67	ELECTRIC MOTOR FIRE PUMP (150 HP)	NAFFCO	NF-S150-100
8	SADDEL STITCH	3ENLI	BL-T388	28	DIGITIZER	CHAINA	3648	48	PRESS MACHINE	WEISSHI	AZT-011	68	JOCKEY PUMP (5 HP) (Electric)	NAFFCO	NFVL4-190
9	CHAIN STITCH	JUKI	ML-111	29	PLOTTER /MARKER	CHINAWAY	JET1600C-Z	49	PRESS MACHINE	WEISSHI	G-35B	69	DIESEL ENGINE FIRE PUMP (185 HP)	NAFFCO	NF-S150-100
10	CHAIN STITCH/DOUBLE	JUKI	MH-380	30	FUSSING M/C	WEISHI	NHJ-1000A/9000	50	PRESS MACHINE	WEISSHI	G-55	70	STEAM IRON	WEISHI	A-22
11	OVERLOCK/5TH	JUKI	6716S	31	BLIND STITCH		VEB-100-2	51	PRESS MACHINE	WEISSHI	A-65	71	STEAM IRON	WEISHI	A-32
12	OVERLOCK/3TH	JUKI	6704S	32	BLIND STITCH	STROBAL	VEB-100-1	52	PRESS MACHINE	WEISSHI	A-26	72	LEVEL CUTTER	GOLDEN EGOL	
13	OVERLOCK/3TH	JUKI	6704DA	33	BELT LOOP MAKING	KANSAI	B-2000C	53	IRON / TABLE	WEISHI	A-26	73	MOISTURE METER	AQUA	AQUA
14	OVERLOCK/CHAIN 2 TH	PAGASUS	M922-02	34	LIGHT BOX	CHINA	KAI-70	54	IRON / TABLE	WEISHI	YT-Q-R	74	WEIGHT MACHINE	MEGA	MEGA
15	BUTTON STITCH	JUKI	1903B-SS	35	AUTO LEA CUTTER	HANGHAI ZUOSE	CZD-B-11	55	IRON / TABLE	WEISHI	MZT-033	75	Poly Seal Machin	King Ster	
16	BARTACK	JUKI	1900B-SS	36	WEST BELT TACK	STROBAL	K.560-21-C	56	LEG IRON TABLE	WEISHI	YTQ-V-13				
17	EYELET HOLE	DURKOPP	580-121	37	SHULDER F/JOIN	STROBAL	697-15155	57	SIDE CUTTER	SHDA	SK-103N-3				
18	SLEEVE SETTING	DURKOPP	650-10	38	SHULDER F/JOIN	STROBAL	697-24155	58	HIGH BASTTING	SHDA	SK-333				
19	A.P.W M/C	DURKOPP	745-35-01	39	HAND STITCH	SHDA	SK-786A	59	SPOT REMOVING MACHINE	MAX	460				
20	BAND KNIFE	KAGU	DCQ1200-II	40	SLEEVE DECORATION	RECES	S-4000	60	BOILER	YUANDA CHINA	DZ12-1.0-AII				

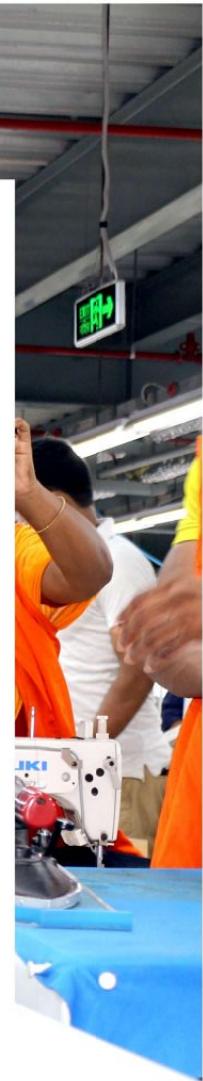


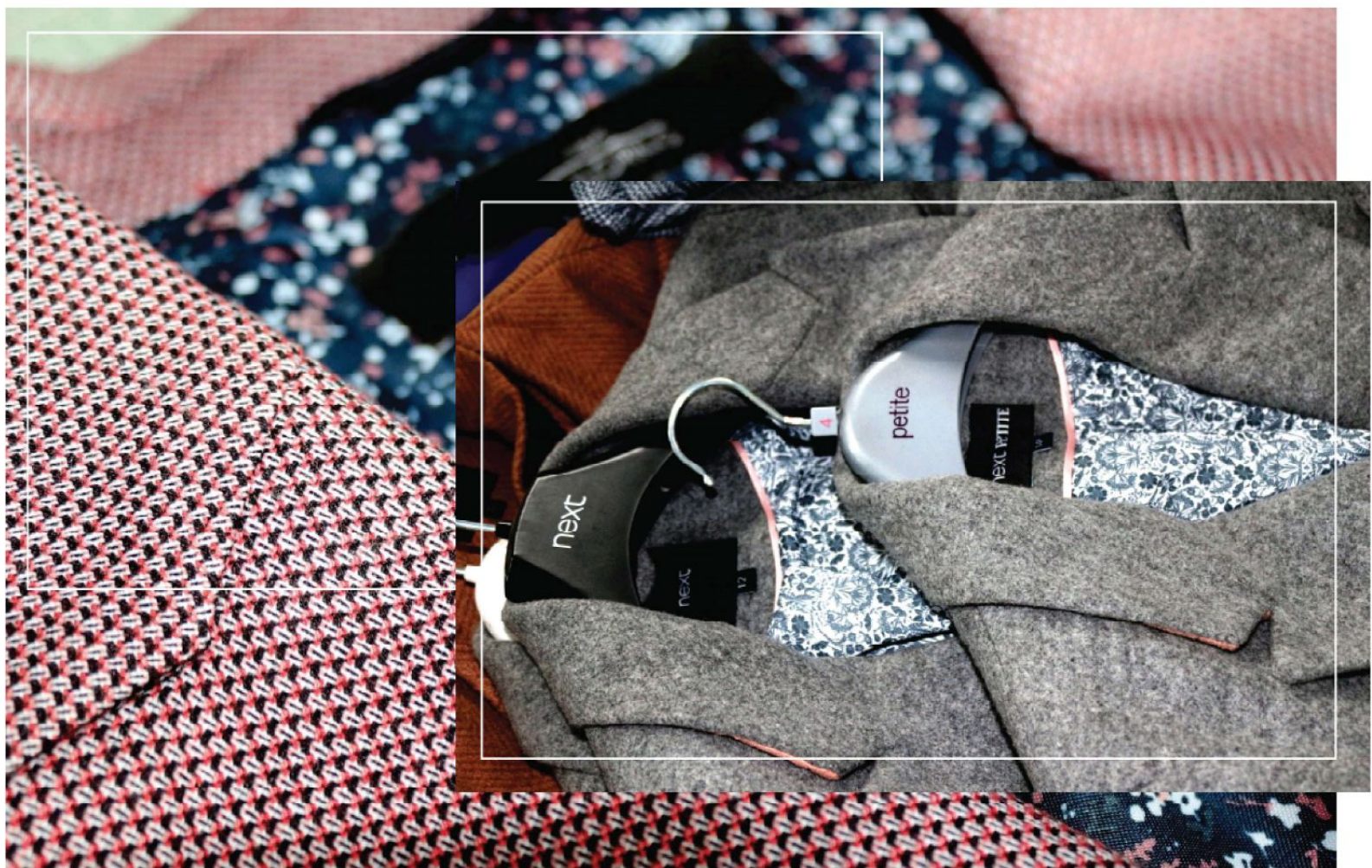
NOTES

NOTES



NOTES







VIRGO M H LIMITED

(Virgo Mahabuba Holdings Limited)